

## VIEW MicroLine 300

The VIEW MicroLine 300 from QVI® is a high-performance critical dimensional measurement system for wafers, masks, MEMS, and other micro-fabricated devices. This capable desktop instrument provides precise automated field-of-view measurement of features ranging in size from 0.65  $\mu\text{m}$  to 400  $\mu\text{m}$  on parts up to 200 mm.

- Motorized autofocus for optimum image quality
- Programmable light intensity
- Robust capabilities for measuring transparent layers, lines with irregular edges and more

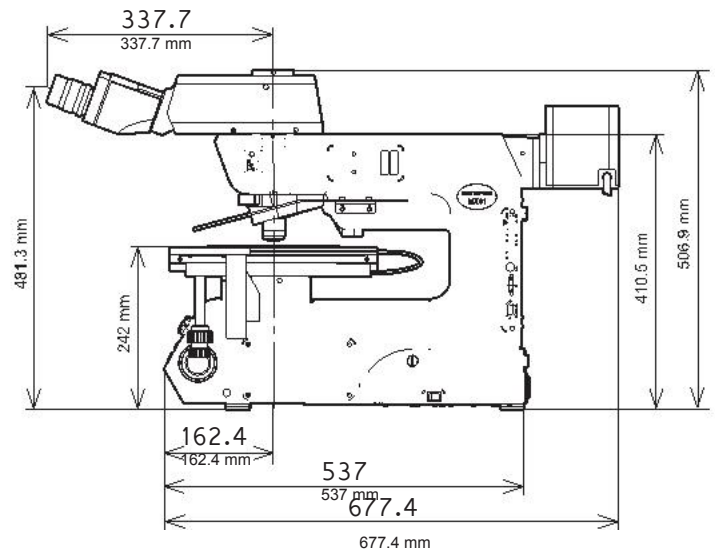
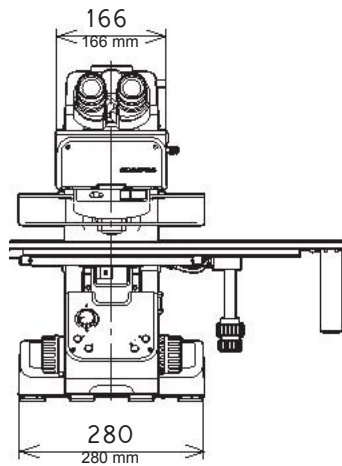
	X	Y	Z
Travel (mm)	200	200	25

Automated critical dimensional metrology system



## Metrology Software:

- VIEW Metrology Software (VMS) - for manual stages
- Optional: VMS Off-Line Workstation Software



Uncrated: 56 kg  
Crated: 110 kg

	Standard	Optional
X,Y,Z Measuring Range (mm)	200 x 200	300 x 300
Z Focusing Range (mm)	25	
XY Stage	Cross roller with manual coaxial positioning and quick release	Glass stage insert for use with transmitted light
Z Stage	Spring loaded, rack & pinion vertical motion with dual coarse/fine adjustment knobs	
Max Recommended Load	2 kg	
Imaging Optics	Olympus Microscope optics, including horizontal bright field/dark field illuminator, five-objective motorized lens turret, tilt trinocular with eyepieces, and standard camera mounting tube	
Front Objective Lens (Field Interchangeable)	10X Bright Field 50X Bright Field	5X Bright Field or Bright Field/Dark Field 10X Bright Field or Bright Field/Dark Field 20X Long Working Distance, Bright Field or Bright Field/Dark Field 100X Long Working Distance, Bright Field or Bright Field/Dark Field 150X Long Working Distance, Bright Field or Bright Field/Dark Field
Metrology Camera	1.4 megapixel (1392 x 1040), 1/2-inch, digital, monochrome	2.0 megapixel (1628 x 1236), digital, monochrome
Illumination	Full spectrum, programmable tungsten halogen coaxial surface light	Full spectrum, programmable tungsten halogen transmitted light with adjustable N.A. stop
System Controller	Quad core processor, Windows® 7 Operating System and on-board networking and communication ports	
Controller Accessory Package		Single LCD flat panel display, computer keyboard and mouse Dual LCD flat panel displays, computer keyboard and mouse
Power Requirements	115/230 VAC, 50/60 Hz, 1-Phase, 500W	
Rated Environment	Temperature: 20°C ± 5°C Temperature Change: <2°C per hour Relative Humidity: 30% - 80% Vibration: per ISO VC-B	Vibration: per ISO VC-C for use of 150X objective lens